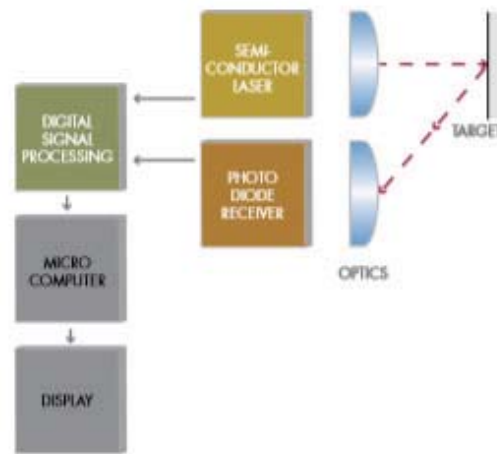


### 3D 激光雷达核心部件

应用：三维映射、自适应巡航控制、高级驾驶辅助系统、农业、无人驾驶、无人机、安全扫描



原理示意图

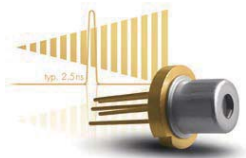
提供产品：



#### 905DxxUA Series Pulsed Laser Diodes

Highly Reliable Pulsed Laser Diodes

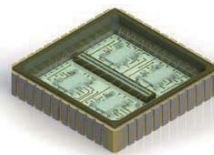
- AEC-Q101 automotive qualified with excellent temperature stability
- Up to 110W laser output power
- 905 nm



#### QuickSwitch Pulsed Laser Diodes

Fastest Hybrid Pulsed Laser Diode

- 1.5 to 5 ns pulse duration, up to 90W in TO-56 package
- Pulse frequencies at up to 200kHz
- 905 nm



#### Si APD Arrays

Simplify Time-of-Flight Sensor Development

- 8-, 12- or 16-element arrays, 190 x 650µm, custom versions
- 14-pin DIL or SMD package
- Responsivity between 440nm–1000 nm

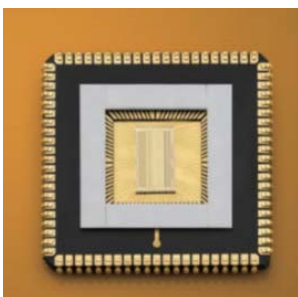


#### APD Receivers

Best Possible Signal-to-Noise Ratio

- Low Noise Equivalent Power
- Various gain / bandwidth configurations
- Responsivity between 400nm–1100 nm (Si); or 900nm–1700 nm (InGaAs)

CMOS 芯片用于快速雷达



	规格	单位
尺寸	8960x5200	um
技术规格	0.35um CMOS	
像元数量	192x2	
SPADs/ 像元	4	
像元尺寸 ( 仅仅 SPADs )	40.56x209.6	um
填充因数	5.32	%
行距	1019.78	um
帧速 @20MHz 读出时间	52	KHz